

## M1 - Sustainability Impact Assessment

### WP 1.2 - Data coordination and validation

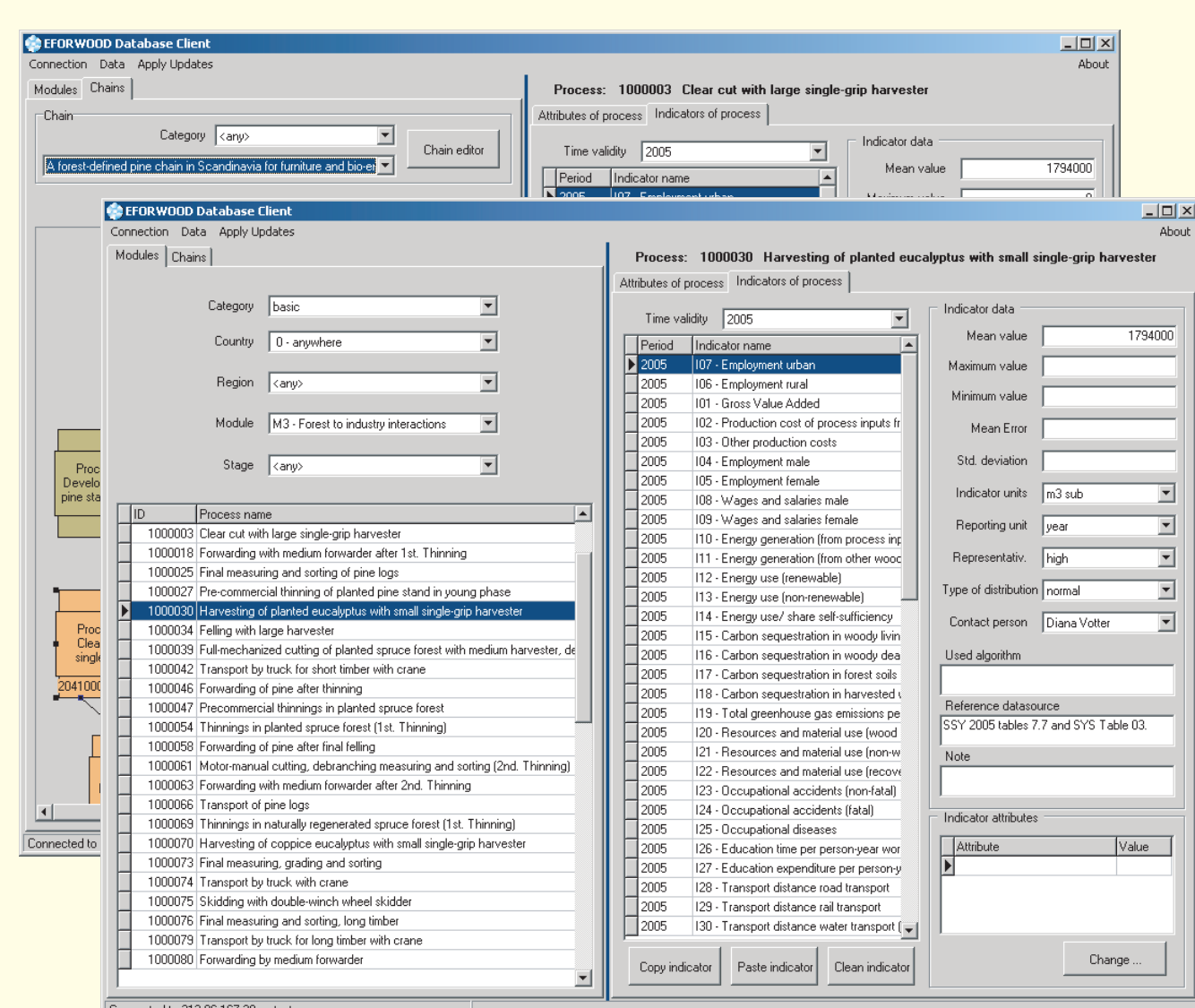
## EFORWOOD Database Client Software Tool for Internet Based Data Collection

### Clients (Module experts)

The EFORWOOD Database Client is a software tool designed to allow EFORWOOD partners to enter data into the common EFORWOOD database and to design chains

- is based on client-server technology to enable multiple on-line access to the actual database
- used to collect data for single FWC
- approx. 5 clients connected a day
- consists of two main parts: Data Editor and Chain Editor

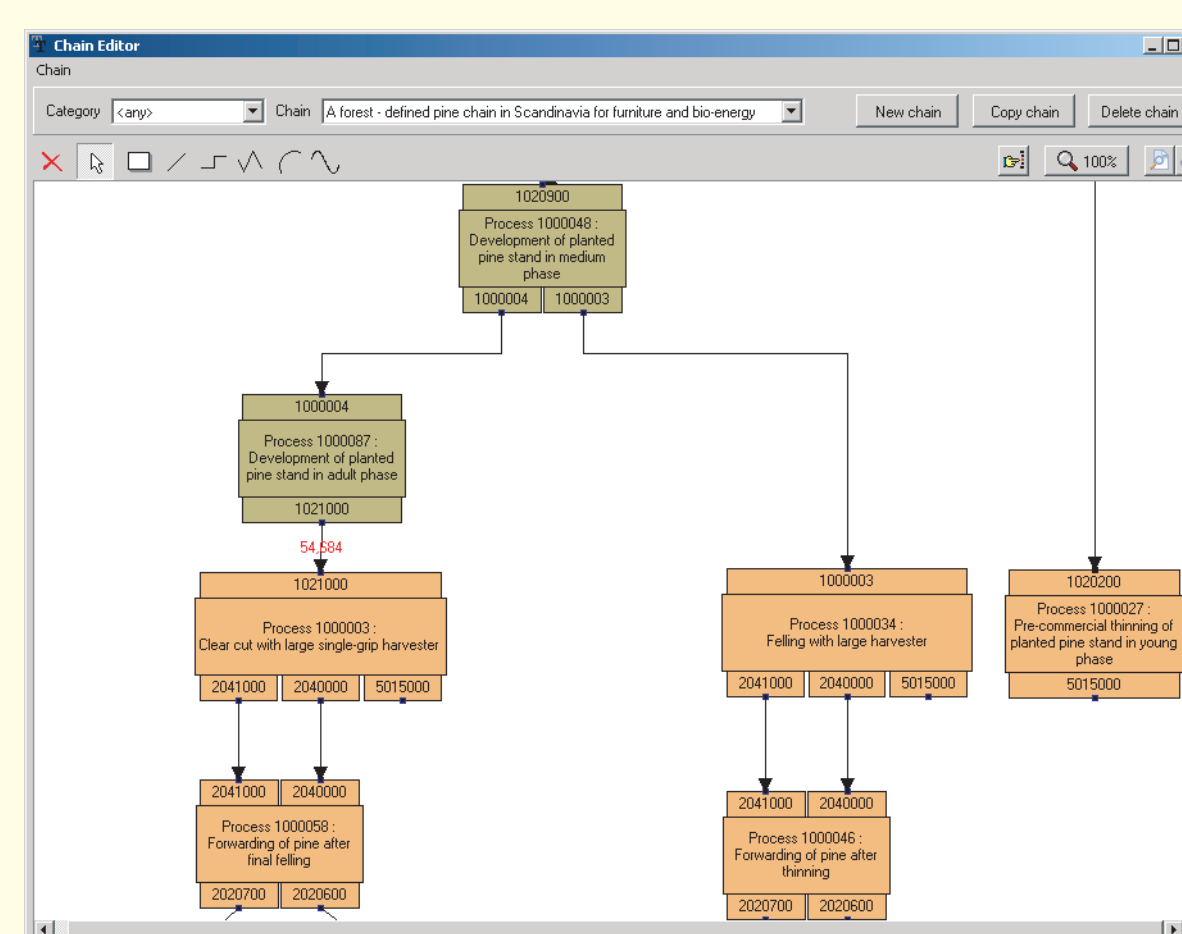
### Data Editor



### Main features

- Editing attributes of a process
- Editing main process attributes
- Editing input / output products
- Editing conversion factors
- Editing indicator values
- Copying indicator values
- Pasting indicator values
- Cleaning indicator values
- Possibility to select a process by filtering a list of processes or using the graphical representation of a chain

### Chain Editor



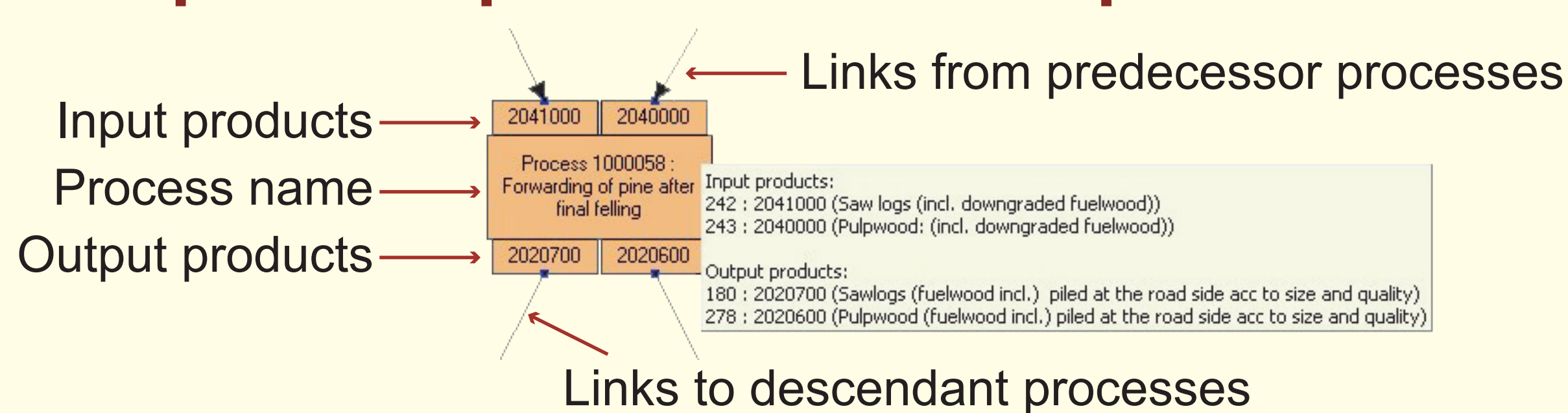
### Main features

- Creating new chains
- Copying and deleting existing chains
- Zooming the chain structure
- Printing the chain structure
- Moving processes within chains
- Creating new processes
- Adding existing processes into chains
- Removing processes from chains
- Creating new products
- Editing input / output products to an existing process
- Adding / deleting links

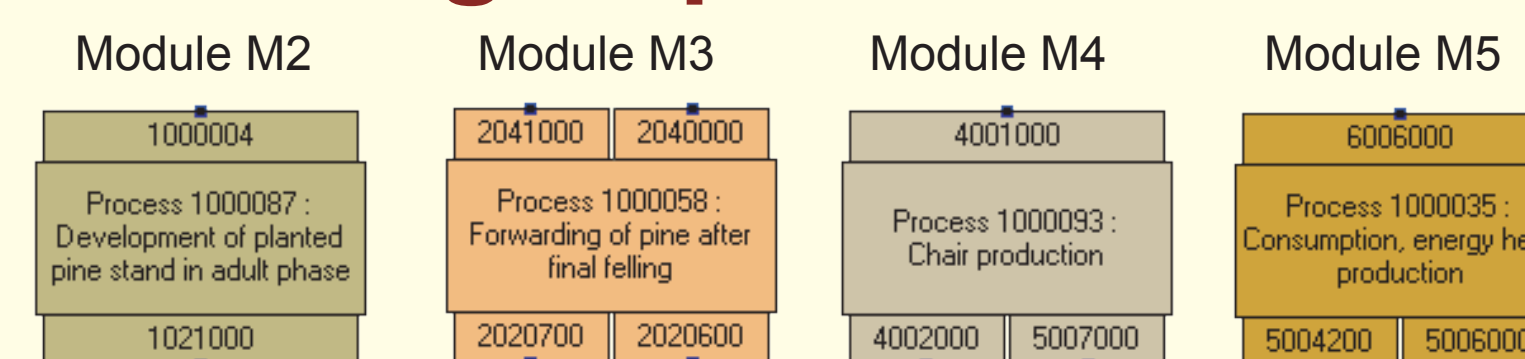
### Data access permission

- **Module data editing permission**  
permission to edit data of a certain module
- **Chain editing permission**  
permission to open the chain editor and work with chains according to their „Chain category permission“ and „Process category permission“
- **Chain category permission**  
permission to create, delete and modify chains of a certain category
- **Process category permission**  
permission to create and modify processes of a certain category
- **Lookup list editing permission**  
permission to edit lookup lists

### Graphical representation of a process

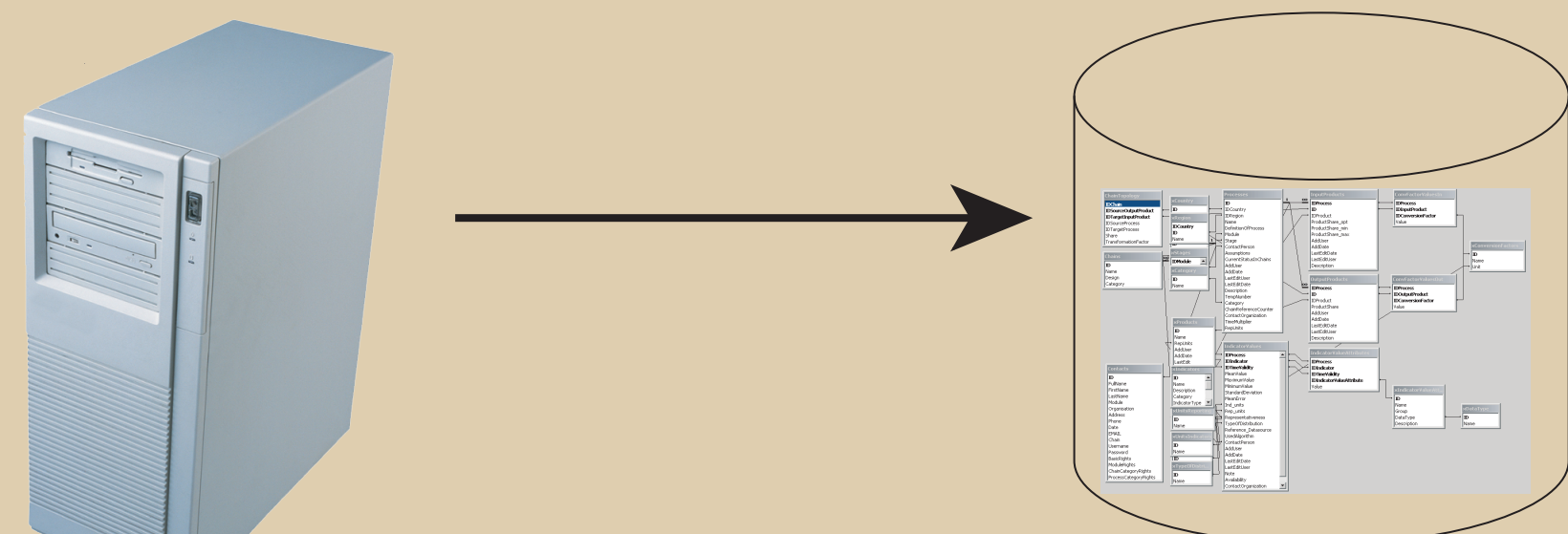


### Coloring of processes



### Application Server

### EFORWOOD Database



XML file

ToSIA, Scenarios, ...

Application server is an application that provides connection between the clients and the database

- runs on a dedicated computer located in IFER
- accessible via the Internet
- connected to the actual EFORWOOD database
- handles multiple simultaneous connections of client applications
- manages the user permission for each user
- exports contents of the database in XML format for ToSIA