

**23-24 September 2009  
EFORWOOD Conference**

# **The policy framework of SIA**



**María Gafo Gómez-Zamalloa**



**European Commission  
Enterprise and Industry**

# The policy framework of SIA

**1. Introduction: policy and research**

**2. SIA and the forest sector**

**3. Policy framework and some policy cases: APIS FBI, climate change and energy**

**5. Conclusions**

# 1. Introduction: policy and research



- **Policy** is not an authoritative choice of values, it is a representation of a particular way of seeing and understanding the world.
- First step: **understanding** what the problem is before setting off to solve it. Here lies the **contribution of science** to policy.
- Scientists should pursue problems of **interest to society**.
- Sustaining forest sector depends upon building **collaborative partnerships** among scientists and policy makers.

# The policy framework of SIA

**1. Introduction: policy and research**

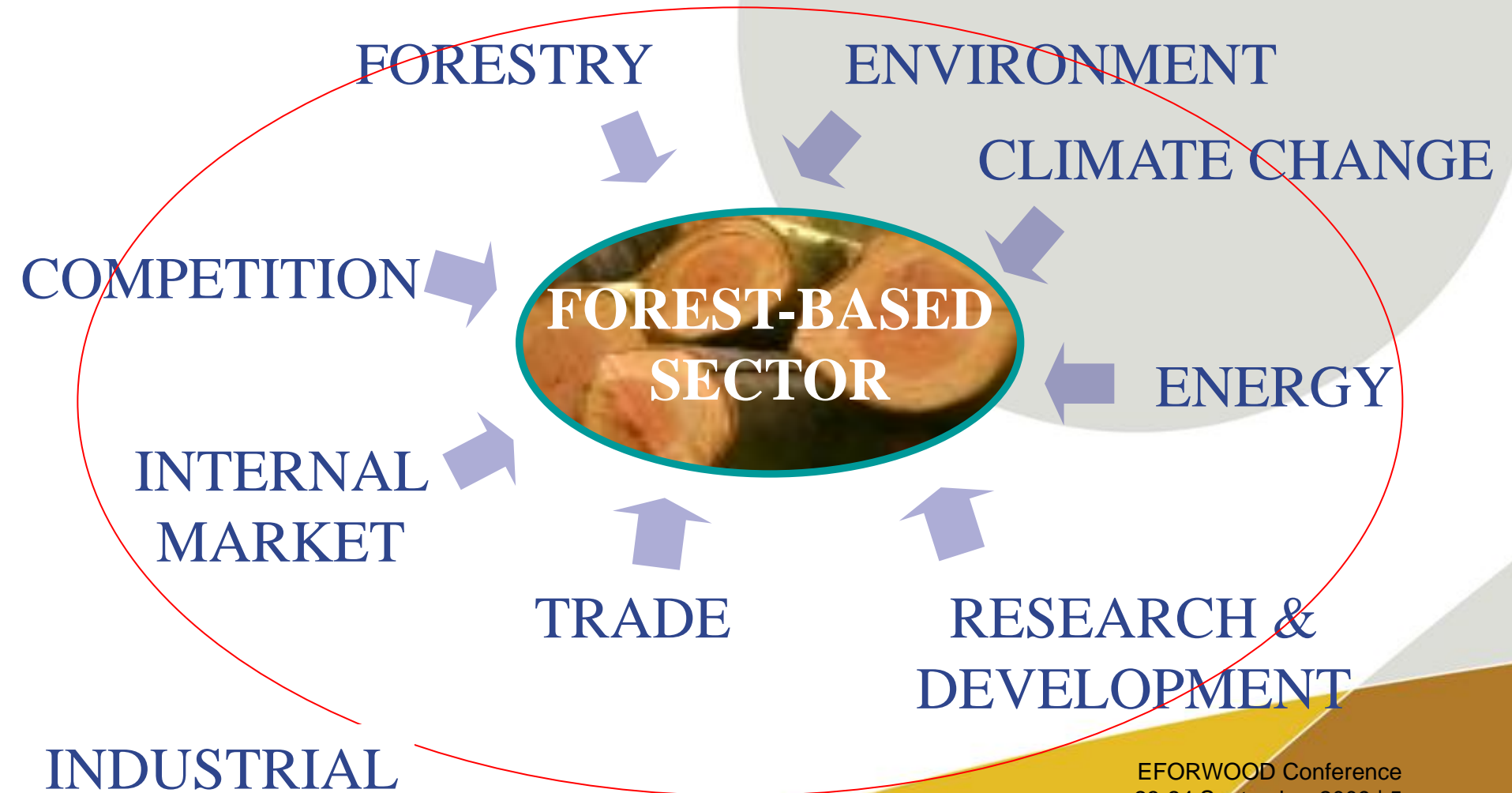
**2. SIA and the forest sector**

**3. Policy framework and some policy cases: APIS FBI, climate change and energy**

**5. Conclusions**

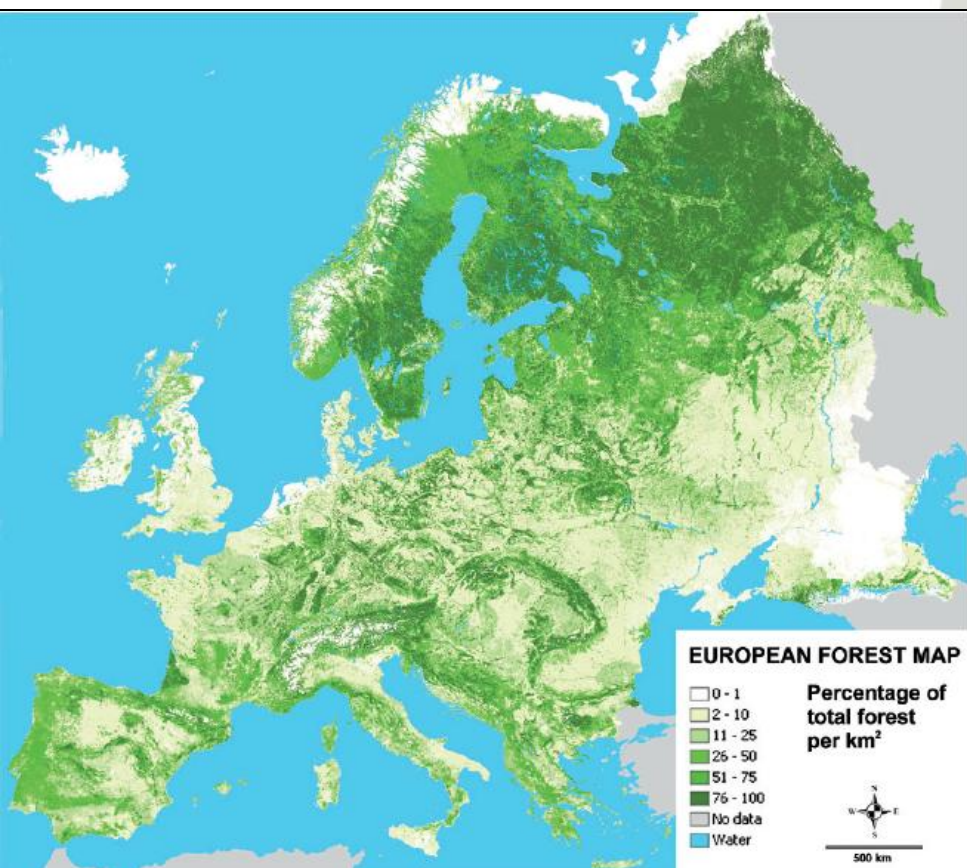
## 2. SIA and the forest sector

→ Nobody needs to be convinced of the complexity inherent in forest sector.



## 2. SIA and the forest sector

### Forests in the EU



#### Surface:

Forests and other wooded land cover approximately 176 million ha (35% of the EU territory), of which 117 million ha are available for wood supply.

#### Ownership:

40% public and 60% private

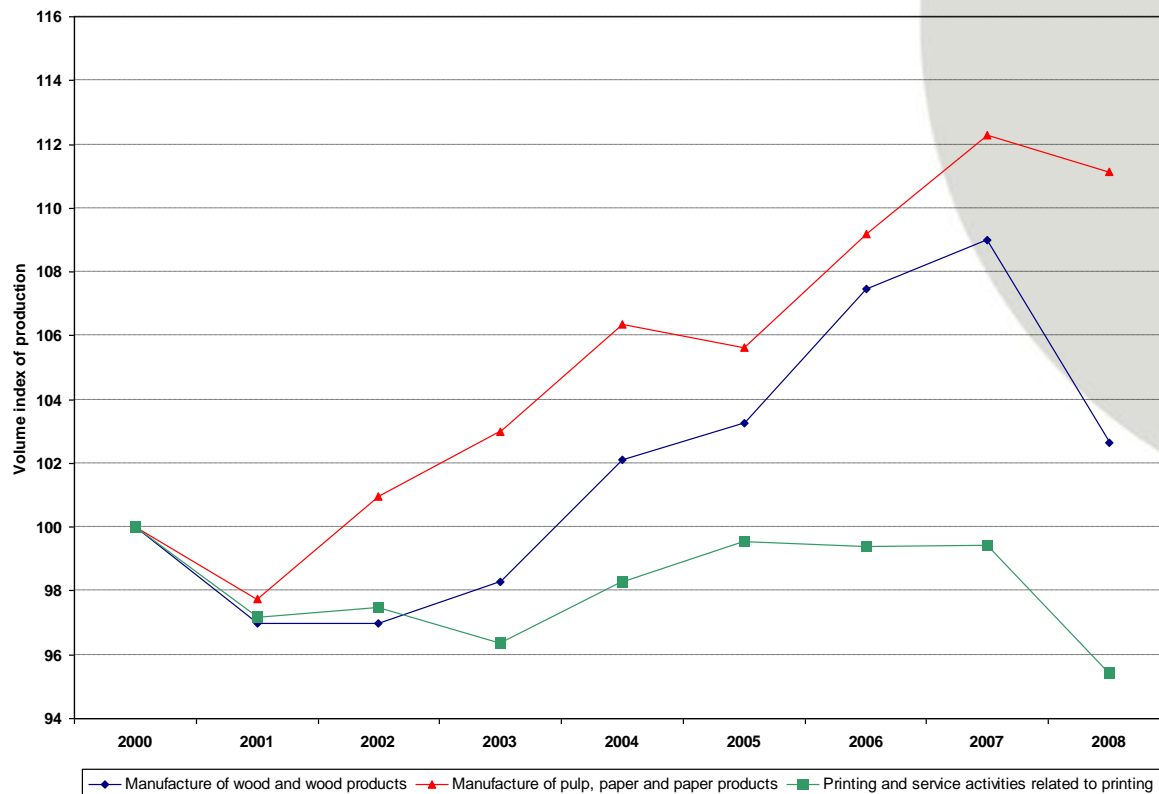
#### Certification:

Around 50% of the forests are certified

## 2. SIA and the forest sector

### Production of forest-based industries

EU27 industrial production index (2000 = 100)



Production evolution for the forest-based industries in EU 27

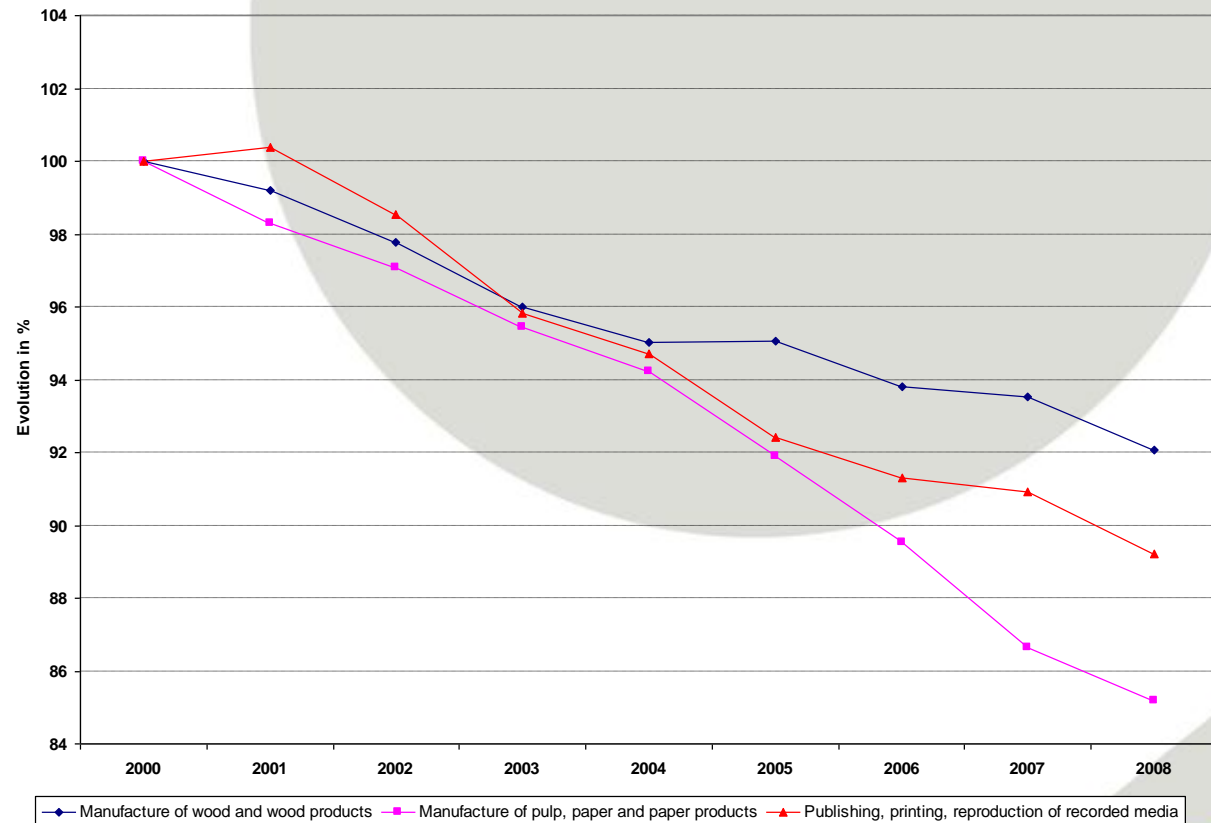


## 2. SIA and the forest sector

### Employment in the forest-based industries



EU27 employment evolution (2000 = 100)

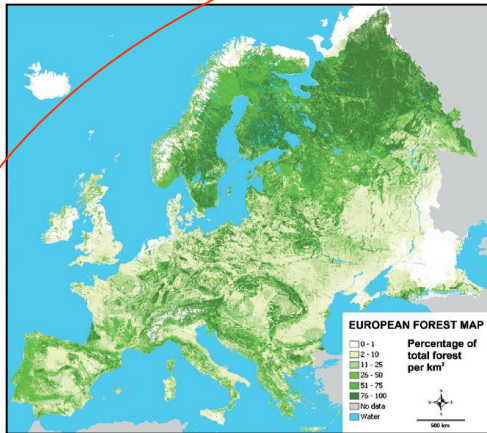


Employment evolution for the forest-based industries in EU 27



## 2. SIA and the forest sector

# Sustainability impacts of modifications of Forestry-Wood Chains



SIA

# The policy framework of SIA

**1. Introduction: policy and research**

**2. SIA and the forest sector**

**3. Policy framework and some policy cases: APIS FBI, climate change and energy**

**5. Conclusions**

## 3. Policy framework and some policy cases

# APIS FBI (Action Plan on Innovative and Sustainable Forest-based Industries COM(2008)113)

19-Point Plan to address the challenges of the forest-based industries:

- **Access to raw materials (8 actions)**
- **Climate change and environmental policy (4 actions)**
- **Innovation and R&D (4 actions)**
- **Trade and cooperation (2 actions)**
- **Communication and Information (1 action)**

## 3. Policy framework and some policy cases

### APIS FBI (Action Plan on Innovative and Sustainable Forest-based Industries COM(2008)113)

7 actions for 2009 taking into account the current EU policy priorities:

- **Competitiveness of forest-based industries in the framework of climate change and energy (actions 2, 8, 9 and 11):** biomass for RES and FBI, Energy Intensive Industries, harvested wood products
- **Illegal logging (action 5):** additional incentives for private sector measures.
- **Competitiveness aspects of waste policy and recovered material for the Forest-based Industries (action 3):** recovered paper
- **Innovation and SMEs (action 15):** competitiveness of SMEs in the printing sector.

# 3. Policy framework and some policy cases

## APIS FBI (Action Plan on Innovative and Sustainable Forest-based Industries COM(2008)113)



**Clear commitment from the EU to support growth and jobs**

**What is the impact in the competitiveness and employment of forest-based industries?**

- Changes in the supply of raw material
- Price of energy
- Innovation and research improvement
- Tariff and non tariff barriers
- Wrong perception
- ...

# 3. Policy framework and some policy cases

**Climate change and energy:** renewable energy sources, emissions trading, harvested wood products, forests as sinks, carbon footprint



# 3. Policy framework and some policy cases

## Climate change and energy: relevant during the whole cycle of the forest-based sector



**•Before the gate:**  
sustainable forest management

**•Inside the gate:**  
Efficiency - use of RES - emissions

**•After the gate:**  
renewable and recyclable products



# 3. Policy framework and some policy cases

## Clear commitment from the EU to advance towards a low carbon economy



**What will be the impact in the forest-based sector of the climate change and energy policies?**

- increase in the use of biomass for energy
- Increase of biofuels
- Strengthening of ETS
- Inclusion of forests as sinks under ETS
- Consideration of the role of harvested wood products as CO<sub>2</sub> storages
- ...



# The policy framework of SIA

**1. Introduction: policy and research**

**2. SIA and the forest sector**

**3. Policy framework and some policy cases: APIS FBI, climate change and energy**

**5. Conclusions**

## 4. Conclusions

- Sustaining forest sector depends upon building **collaborative partnerships** among scientists and policy makers.
- **Forest sector** inherently **complex**
- Contribution from **EFORWOOD**: methods to assess the sustainability impacts of modifications of Forestry-Wood Chains as influenced by policy changes, market drivers, or technological innovations.
- Some current policy cases where SIA relevant: **APIS FBI, climate change, energy**

Prehistory:  
Stone age



Industrial revolution:  
metals



XXI century:  
Opportunity for wood



-10.000 AC  
Palaeolithic

-7000 AC  
Neolithic

-2000  
Bronze  
Age

-1000  
Iron Age

500  
Middle  
Ages

1800  
Industrial  
Revolution

2000  
Oil Ages

XXI century  
Wood Age?

# Thank you for your attention!



[http://ec.europa.eu/enterprise/forest\\_based/index\\_en.html](http://ec.europa.eu/enterprise/forest_based/index_en.html)