



# Analysis of leaching water by MP-AES of modified wood with tannin-boron associations

HU JINBO<sup>1,2</sup>, TONDI GIANLUCA<sup>3</sup>, CANDELIER KÉVIN<sup>1</sup>, THEVENON MARIE-FRANCE<sup>1</sup>

<sup>1</sup>Research Unit BioWooEB, CIRAD, TA/B 114/16, 34398 Montpellier Cedex 5, France,

<sup>2</sup>College of Material Science and Engineering, Central South University of Forestry and Technology, Shaoshan South Road, No. 498, Changsha, Hunan, 410004, China,

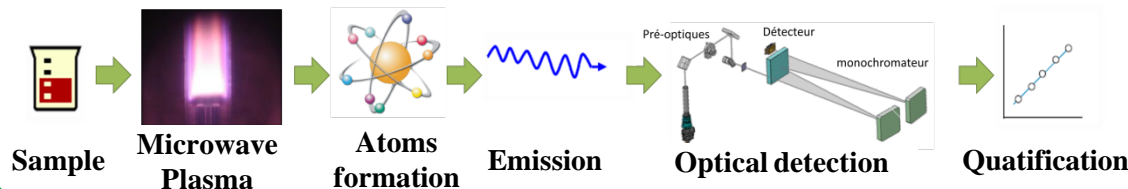
<sup>3</sup>Salzburg University of Applied Sciences, Forest Products Technology and Timber Constructions Dept., 136a Marktstraße, 5431-Kuchl, Austria,



Agilent 4100 Microwave Plasma-Atomic Emission Spectrometer (MP-AES), CIRAD, UR114 BioWooEB.



## Système d'analyse





# Analysis of leaching water by MP-AES of modified wood with tannin-boron associations

## 1 IMPREGNATIONS

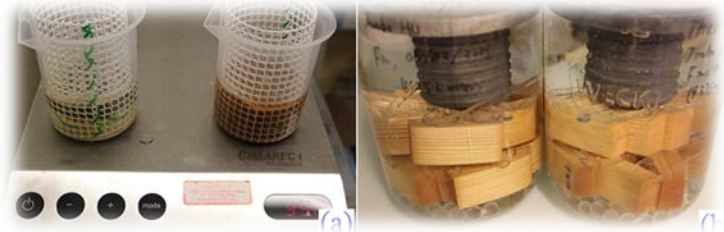
Boric acid  
Tannin- Boric acid  
Tannin - ε-Caprolactame – Boric acid



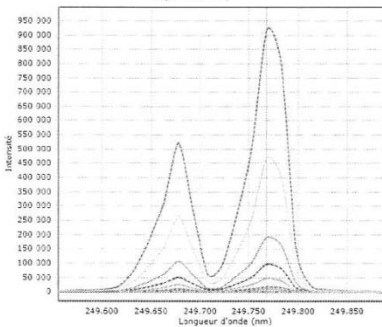
## 2 LEACHING

ENV 1250-2

EN 84



## 3 ANALYSIS OF LEACHING WATERS



-> Determination of boron rate fixed in wood material

# Details and Results on the Poster

